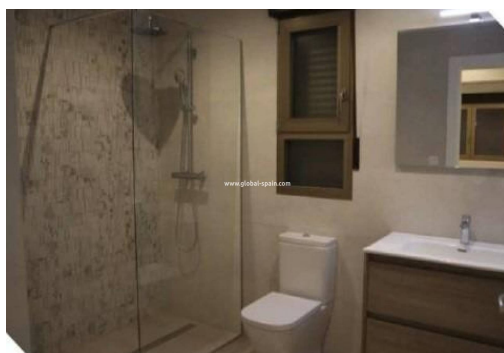




REF. PS-49934
New Build · Villa · Aspe




3 BEDROOMS


2 BATHROOMS


141M²


420M²


PRIVATE


B



NEW BUILD MODERN VILLA IN ASPE New Build modern and innovative design villa in La Romana, Aspe. Villa with 3 bedrooms, 2 bathroom open plan kitchen with living room, terrace, private garden with the pool and parking space. The Villas are pre installed for A/C hot and cold and electric blinds to all the windows. As well you will have a choice of tiles and kitchen so the villa will be finished to your own style and colour. Near Aspe is a very special Town of La Romana within easy walking distance from our development. La Romana has a prosperous economy based on the agriculture that surrounds the town and this prosperity is reflected in the picturesque palm tree lined streets that are very well maintained. There is a medical centre, several supermarkets, hardware, shops, banks ,bakers restaurants & bars and cafes and a Saturday street market where you can buy locally grown vegetables and fresh fish. The region is renowned for the growing of eat...

key features

- Bedrooms: 3
- Bathrooms: 2
- Built: 141m²
- Plot: 420m²
- Energy Rating: B

Characteristics

- Air Conditioning: Pre-Installed
- Beach: 36000 Meters
- Double Bedrooms: 3
- garden
- Gated
- Location: Rural
- Number of Parking Spaces: 1
- Private Pool
- Terrace: 20 Msq.
- Useable Build Space: 115 Msq.