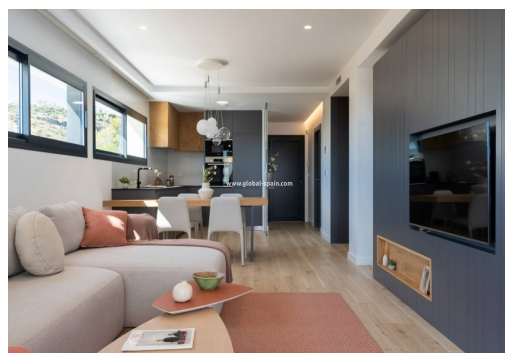
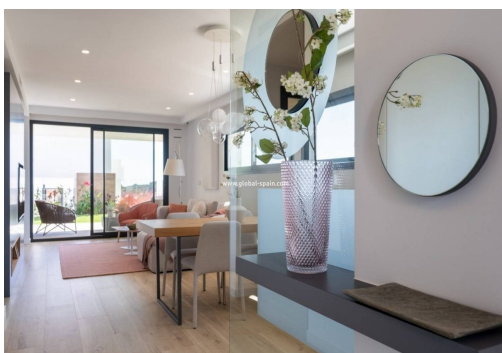
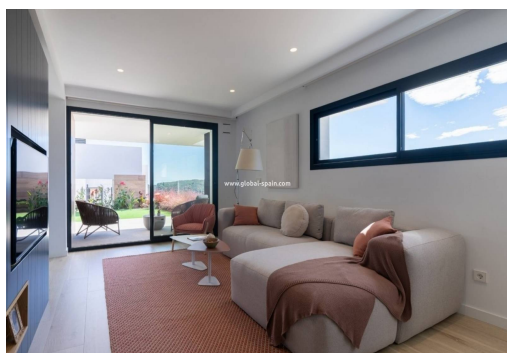




REF. PS-70306

New Build · Apartment · Benitachell



2 BEDROOMS



2 BATHROOMS



88M²



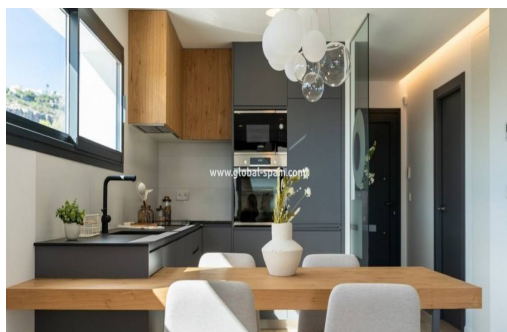
0M²



PRIVATE



B



NEW BUILD RESIDENTIAL IN CUMBRE DEL SOL New Built modern apartments with 2 bedrooms and 2 bathrooms, kitchen open to the living room, with various models to choose from: terrace and garden on the ground floor apartments, solarium on the top floor. All properties distributed to make the most of the space, taking advantage of the Mediterranean light and offering a plus of comfort in your day to day. The equipment in the apartments are also oriented to comfort with under-floor heating, hot and cold air conditioning by conduits with thermostat in the living room, hot water by Altherma system, electrical appliances are included and a project of decoration to give them style and warmth. The communal areas are designed for relax and enjoy as a family, with pool surrounded by large terraces to enjoy the sun, playground for kids, social club, gardens and parking areas. Within a short distance to Cala del Llebeig, the urban core of Moraira and all the s...

key features

■ Bedrooms: 2

■ Built: 88m²

■ Bathrooms: 2

■ Energy Rating: B

Characteristics

■ Air Conditioning: Pre-Installed

■ Communal pool

■ Gated

■ Near Commercial Center

■ Number of Parking Spaces: 1

■ Useable Build Space: 75 Msq.

■ Beach: 1500 Meters

■ Double Bedrooms: 2

■ Location: Coastal, Mountain, Urbanisation

■ Near Schools

■ Terrace: 72 Msq.