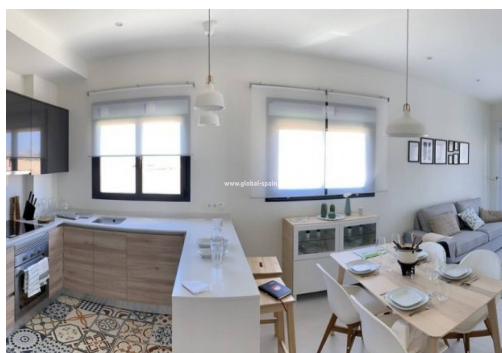
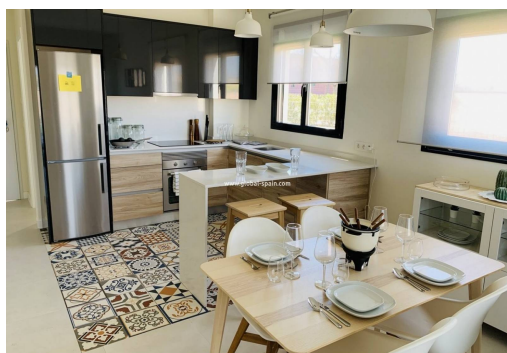
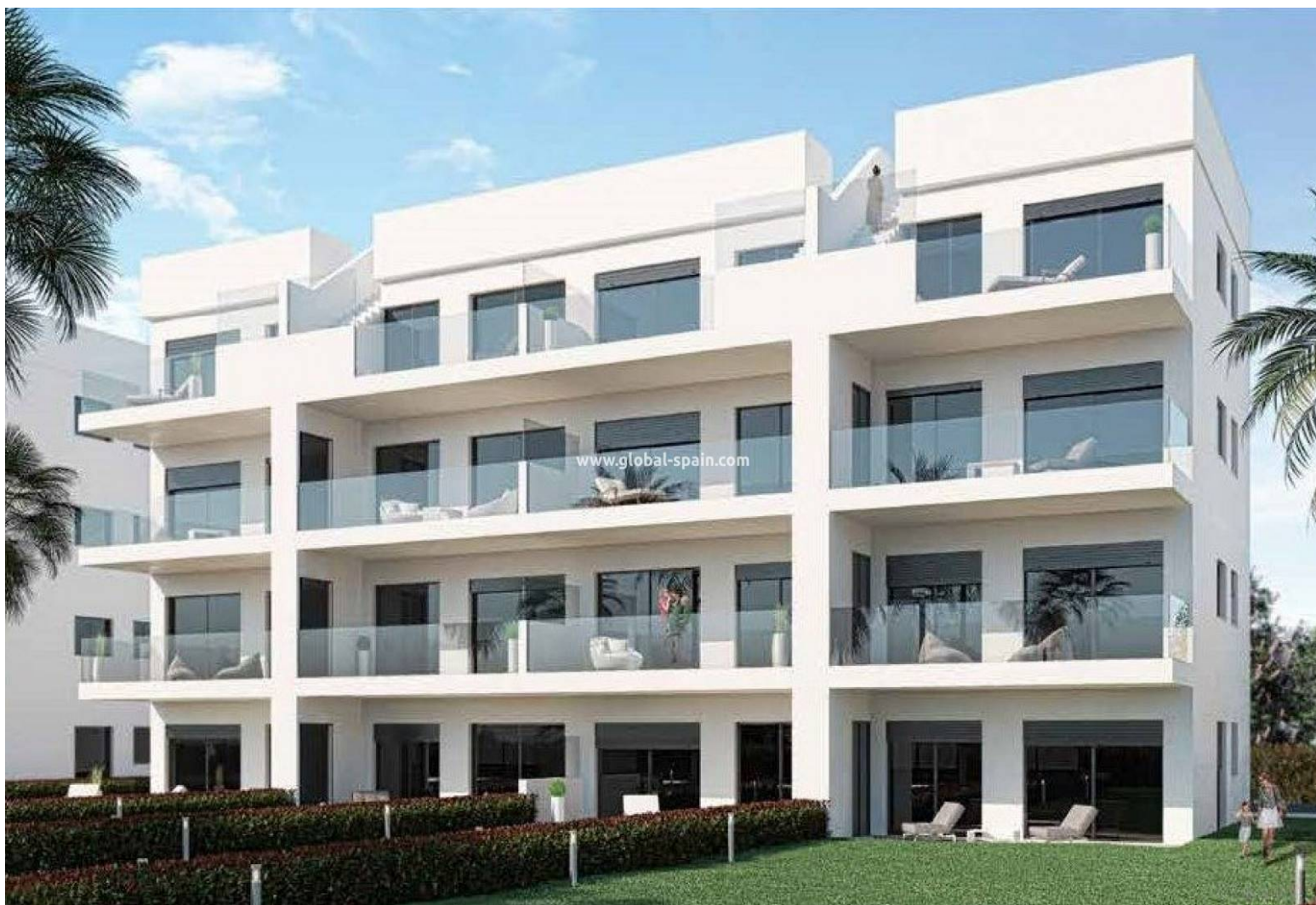




REF. PS-68551

## New Apartments with Golf Views in Condado de Alhama Golf Course



2 BEDROOMS



2 BATHROOMS



67M<sup>2</sup>



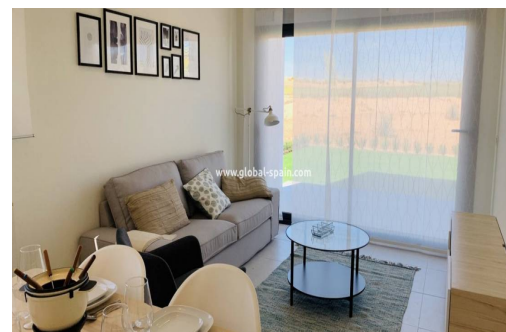
0M<sup>2</sup>



PRIVATE



B



Explore these modern two-bedroom, two-bathroom apartments boasting frontline golf views of ALHAMA SIGNATURE GOLF, designed by Jack Nicklaus. CONDADO DE ALHAMA offers a wealth of amenities, including a shopping center, sports facilities, bars, restaurants, supermarkets, and over 25 communal swimming pools and gardens. Located just 18 minutes by car from the new International Airport of the Region of Murcia, these apartments range in size from 73.88m<sup>2</sup> to 75.22m<sup>2</sup>. Each unit features 2 bedrooms, 2 bathrooms, an open living-kitchen-dining room of 26.80m<sup>2</sup>, and a 17m<sup>2</sup> terrace. Included amenities comprise parking lot, complete bathroom, pre-installation of air conditioning, and video intercom. Enjoy the added security of a 24-hour surveillance system year-round. With magnificent golf course views, residents are just a 15-minute drive from the beaches of Mazarrón. Contact Global-Spain, your trusted Belgian real estate agent, to learn more about these ...

## key features

■ Bedrooms: 2

■ Built: 67m<sup>2</sup>

■ Bathrooms: 2

■ Energy Rating: B

## Characteristics

■ Air Conditioning: Pre-Installed

■ Communal pool

■ Elevator/Lift

■ Near Childrens Parks

■ Near Golf / Golf Resort Property

■ Solarium: Yes

■ Useable Build Space: 60 Msq.

■ Beach: 30000 Meters

■ Double Bedrooms: 2

■ Location: Rural, Mountain, Urbanisation

■ Near Commercial Center

■ Near Schools

■ Terrace: 47 Msq.