



REF. IPM-57410  
Resale · Villa · Palmanova



5 BEDROOMS



5 BATHROOMS



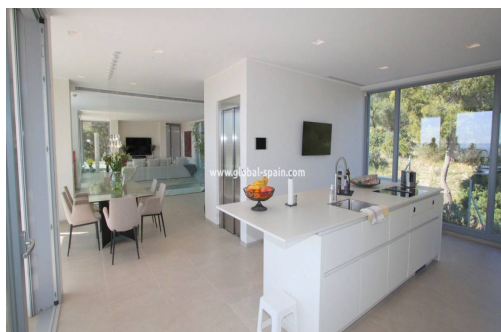
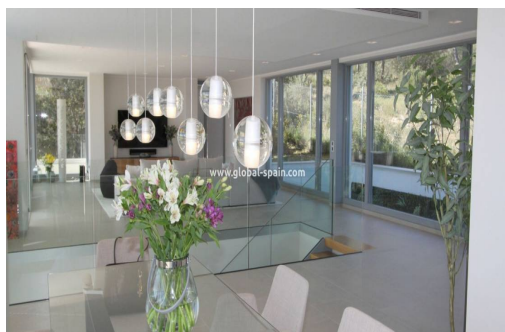
600M²



1.220M²



IN PROCESS



Walking into this property, you can feel the warmth and style that has been used in the construction of this magnificent villa. Behind the electrically operated gate to the driveway that can be operated from anywhere in the world, you can drive up to the 3 car garage, which also has parking for two more cars outside. You will pass the luxury looking garden with its lawn and designer landscaping. You will also see the large infinity swimming pool with ample bathing area. Entering the property you are greeted by the larger than average reception area with its glass and oak wood staircase leading to the upper floors. You can also take the elevator if so desired. On this ground floor, you will also find the gymnasium with an ensuite shower room. Of course this room could be used for other uses if required. For example a cinema room or a 5th bedroom. The tech. room for the property is also located on this level, which controls everything including t...

## key features

- Bedrooms: 5
- Bathrooms: 5
- Built: 600m<sup>2</sup>
- Plot: 1.220m<sup>2</sup>
- Energy Rating: In process

## Characteristics

- Air conditioning
- Dishwasher
- Elevator/Lift
- Fibre optic internet
- Freezer
- Fridge
- Garden views
- Heating
- mountain views
- Outdoor grill
- Parking places: 4
- Private Swimming Pool
- sea views
- Storage space