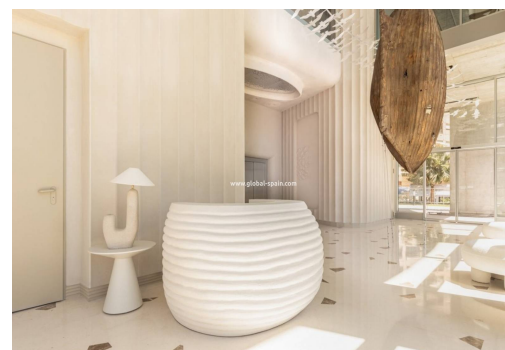
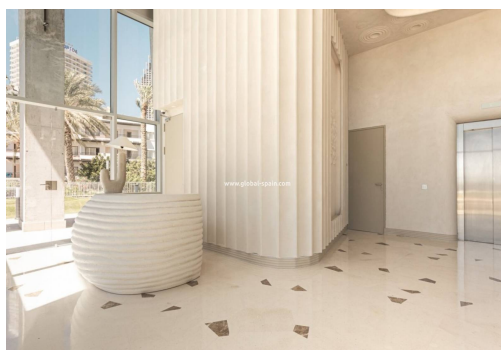
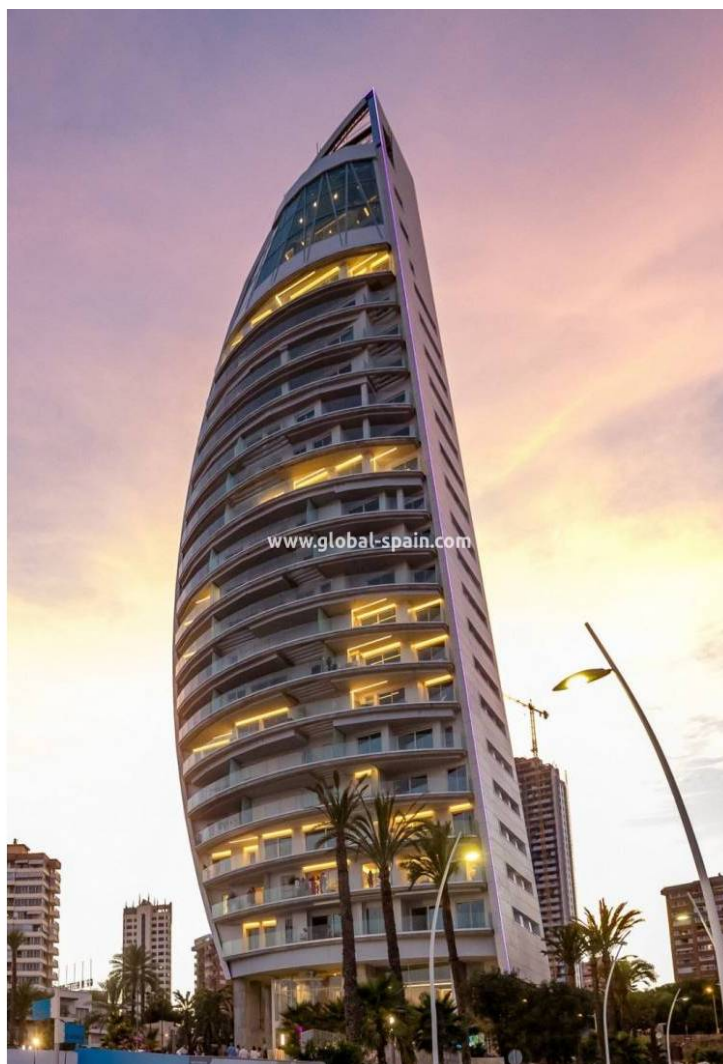




REF. PS-64924

New Build · Apartment · Benidorm



3 BEDROOMS



2 BATHROOMS



109M²



0M²



PRIVATE



B



LUXURY SEAFRONT APARTMENTS IN BENIDORM Unique New Build Luxury Key Ready residential on the Poniente beachfront, Benidorm. Luxury residential with unique design and qualities, is made up of 39 homes with 2, 3 and 4 bedrooms distributed over 20 floors. All apartments have large terraces with amazing sea views, underground parking space and storeroom. Apartments located next to the historic Gran Hotel Delfín, in one of the most privileged enclaves in the Mediterranean: first line on Benidorm's Poniente Beach. With a spectacular design, creating an effect of great lightness, prioritizing energy efficiency and sustainability. The building is not located on the edge of the sea like most buildings in Benidorm, but is set back in order to create a large vegetal platform that, together with the large infinity pool, manages to merge with the horizon creating a large infinite space with the Mediterranean Sea. Its design and construction are focused on a ...

key features

■ Bedrooms: 3

■ Built: 109m²

■ Bathrooms: 2

■ Energy Rating: B

Characteristics

■ Beach: 20 Meters

■ Double Bedrooms: 3

■ First Line to the Sea

■ Gym

■ Location: Coastal, Mountain, Urbanisation

■ Near Commercial Center

■ Near Schools

■ Terrace: 21 Msq.

■ Communal pool

■ Elevator/Lift

■ Gated

■ Key ready

■ Near bus route

■ Near Golf / Golf Resort Property

■ Number of Parking Spaces: 1

■ Useable Build Space: 87 Msq.