



REF. PS-88034

New Build · House · Torrevieja



2 BEDROOMS



2 BATHROOMS



106M²



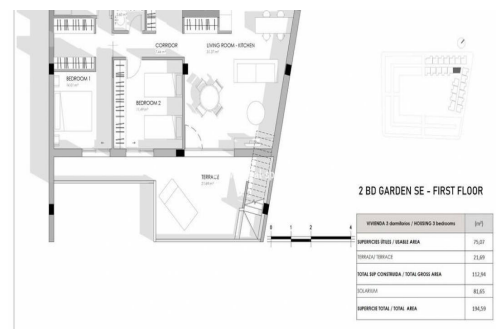
0M²



PRIVATE



B



DESIGN BUNGALOW BY THE SEA Residential in a newly developed area just 250m from the sea. Excellent location very close to the urban center of Torrevieja and surrounded by services, shops and restaurants. The Torrevieja General Hospital and the marina are also nearby. Excellent residential with a beautiful garden, swimming pool and fitness area. Enjoy this complete, modern, and charming bungalow with a minimalist design.

key features

■ Bedrooms: 2

■ Built: 106m²

■ Bathrooms: 2

■ Energy Rating: B

Characteristics

■ Air Conditioning: Pre-Installed

■ Communal pool

■ Gated

■ Near bus route

■ Number of Parking Spaces: 1

■ Solarium: Yes

■ Useable Build Space: 80 Msq.

■ Beach: 250 Meters

■ Double Bedrooms: 2

■ Location: Coastal, Urbanisation

■ Near Schools

■ Parking - Space

■ Terrace: 77 Msq.