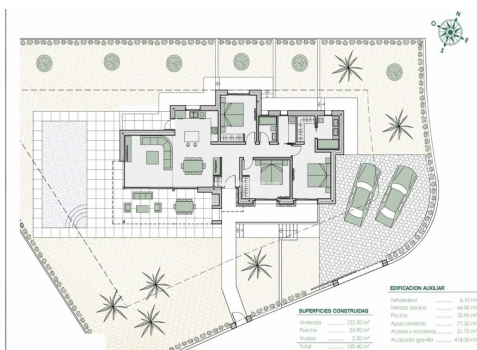




REF. PS-11706
New Build · Villa · Benissa





EXCLUSIVE VILLA INTEGRATED IN NATURE It is located surrounded by nature and located in a strategic place, very close to the Baladrar, Advocat and Fustera coves and just 10 minutes from Calpe and Moraira. A development in which each villa has been designed and specifically adapted to the plot. With an exclusive design and it's own character, it is integrated into their surroundings and designed to enjoy the benign Mediterranean climate. It is distributed all in one floor turning it this way into a practical and functional home. From the entrance you get access to the hall, where you will find on the left side the daily area, here the kitchen is found completely open to the dining room and living room from where you can directly access to the terrace, the outside porch and barbecue. On the right side we get access to the night area distributed into 3 bedrooms. The master room has an individual bathroom with dressing room and the other two bedrooms...

key features

- Bedrooms: 3
- Bathrooms: 2
- Built: 150m²
- Plot: 800m²
- Energy Rating: B

Characteristics

- Air Conditioning: Pre-Installed
- BBQ
- Beach: 1000 Meters
- Double Bedrooms: 3
- garden
- Gated
- Location: Coastal, Mountain, Urbanisation
- Near Trees
- Number of Parking Spaces: 2
- Private Pool
- Solarium: Yes
- Terrace: 60 Msq.
- Useable Build Space: 120 Msq.