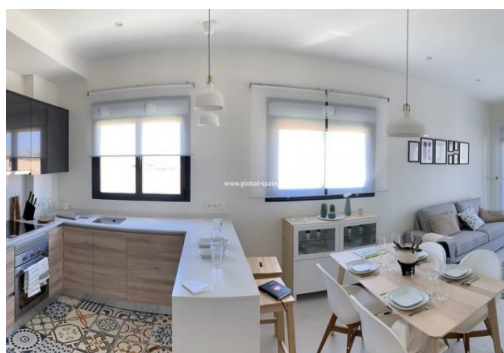
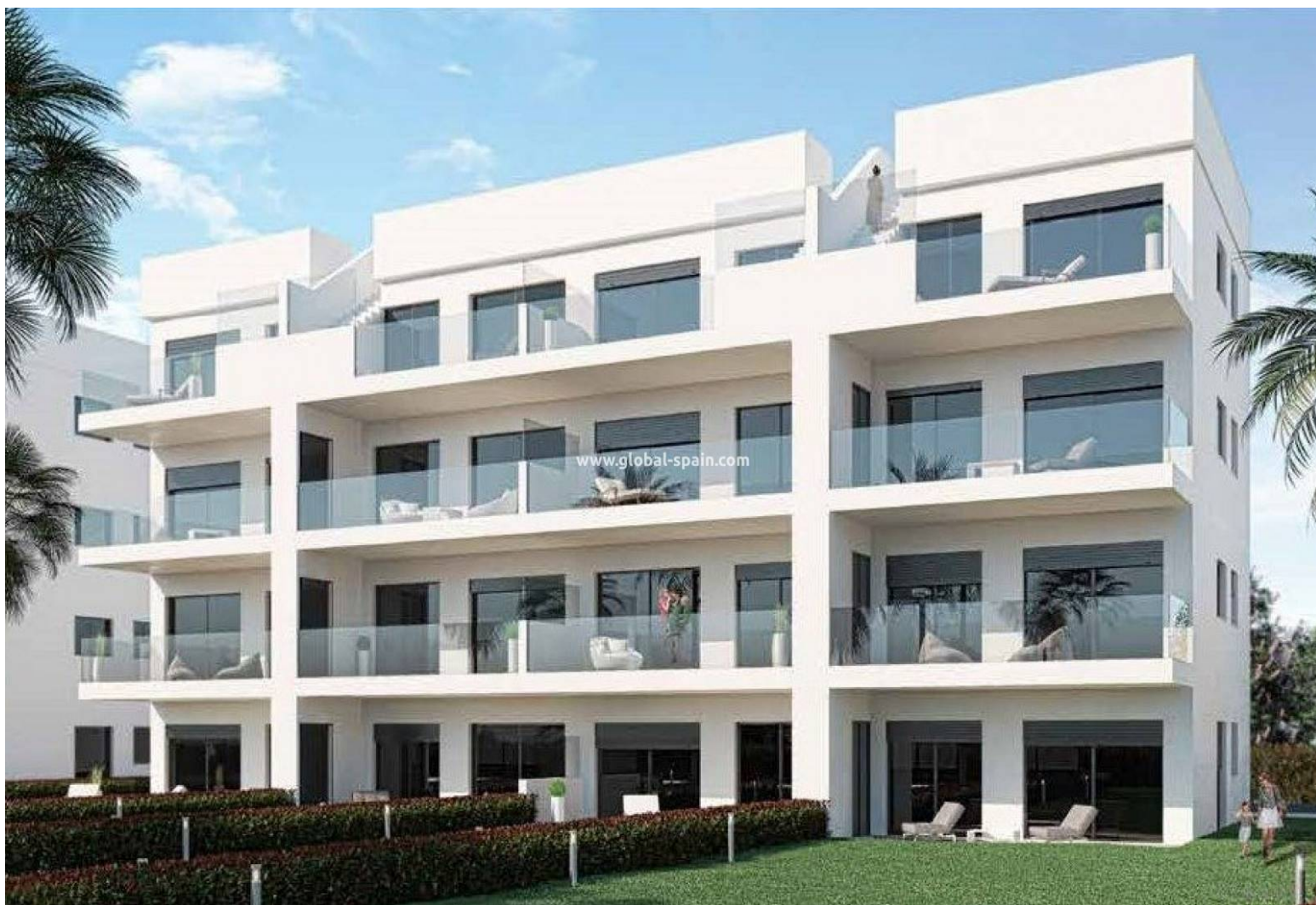




REF. PS-96437

New Build · Apartment · Alhama de Murcia



2 BEDROOMS



2 BATHROOMS



76M<sup>2</sup>



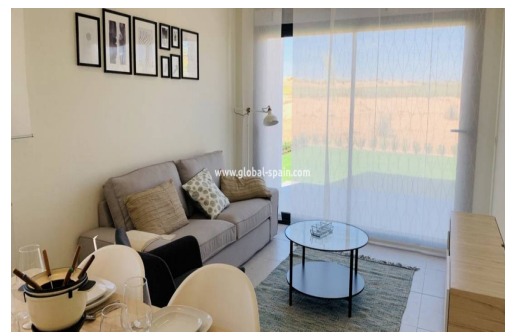
0M<sup>2</sup>



PRIVATE



X



**NEW APARTMENTS IN CONDADO DE ALHAMA GOLF COURSE** New two-bedroom, two-bathroom apartments with frontline golf views of ALHAMA SIGNATURE GOLF, a fabulous 18-hole golf course designed by Jack Nicklaus. CONDADO DE ALHAMA is a fantastic Golf Resort with many facilities and services. A shopping centre, sports centre, a range of bars and restaurants, supermarket... and more than 25 communal swimming pools and gardens. Only 18 minutes by car from the new International Airport of the Region of Murcia. The apartments have an area between 73.88m<sup>2</sup> and 75.22m<sup>2</sup> divided into 2 bedrooms, 2 bathrooms, an open living-kitchen-dining room of 26.80m<sup>2</sup>, and a 17m<sup>2</sup> terrace. Included: Parking lot Complete bathroom Pre-installation of air conditioning Video intercom This promotion enjoys a 24-hour surveillance system every day of the year. We will also enjoy the magnificent views of the golf course and we will be able to be on the beaches of Mazarrón just 15 minutes away...

## key features

■ Bedrooms: 2

■ Built: 76m<sup>2</sup>

■ Bathrooms: 2

■ Energy Rating: X

## Characteristics

■ Air Conditioning: Pre-Installed

■ Communal pool

■ Elevator/Lift

■ Near Childrens Parks

■ Near Golf / Golf Resort Property

■ Terrace: 16 Msq.

■ Beach: 30000 Meters

■ Double Bedrooms: 2

■ Location: Rural, Mountain, Urbanisation

■ Near Commercial Center

■ Near Schools

■ Useable Build Space: 62 Msq.