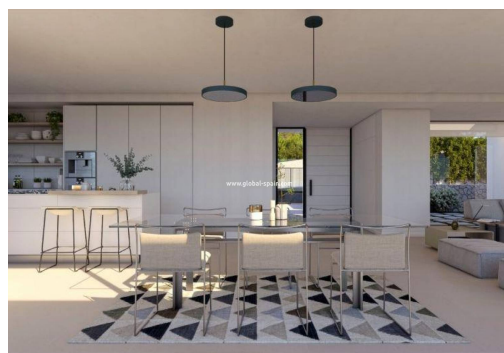
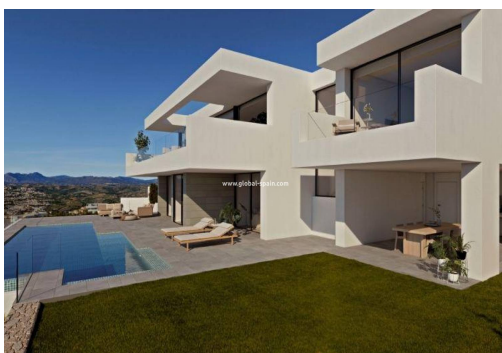
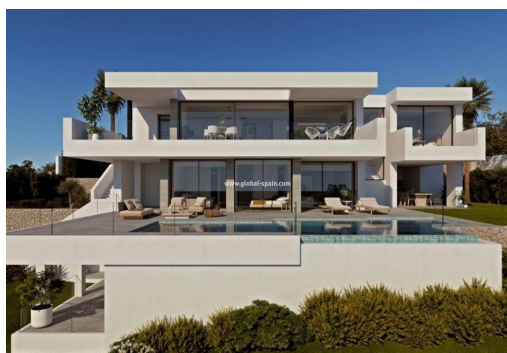




REF. PS-32153

New Build · Villa · Benitachell



3 BEDROOMS



5 BATHROOMS



612M²



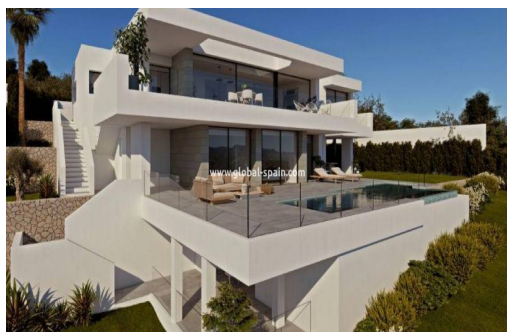
1.158M²



PRIVATE



X



INCREDIBLE VILLA IN A HIGH LEVEL URBANIZATION A villa with modern architecture, with open spaces, lots of light and stunning sea views are the main characteristics that define this property. The villa has 3 bedrooms with en suite bathroom, the master bedroom being a private space to relax in front of the sea either in your hot tub or on your private terrace. The living room deserves a special mention, a spacious and bright stay, with direct access to the terrace with large windows from wall to floor, which are fully collected extending the dining room to the terrace and enjoying incredible sea views. The amenities of this villa are infinite and reflect its quality and equipment: elevator, closed garage for 2 vehicles connected internally with the hall, TV lounge, home automation, laundry room, underfloor heating throughout the house, infinity pool and large garden areas. A wonderful place to live all year round, enjoying the Mediterranean climate...

key features

■ Bedrooms: 3

■ Built: 612m²

■ Energy Rating: X

■ Bathrooms: 5

■ Plot: 1.158m²

Characteristics

■ Beach: 500 Meters

■ Double Bedrooms: 3

■ garden

■ Has Main Electric

■ Location: Coastal, Urbanisation

■ Near Commercial Center

■ Near Schools

■ Private Pool

■ Communal pool

■ Elevator/Lift

■ Gated

■ Heating: Yes, Air Conditioning: Yes

■ Near Childrens Parks

■ Near Golf / Golf Resort Property

■ Parking - Double Garage

■ Terrace: 60 Msq.