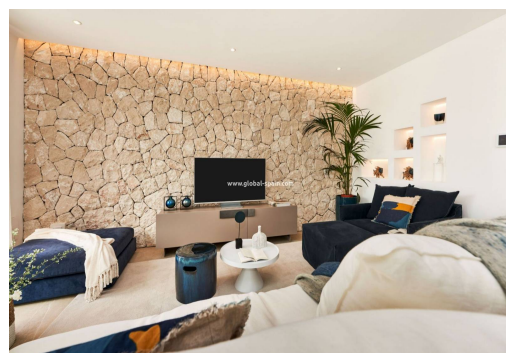
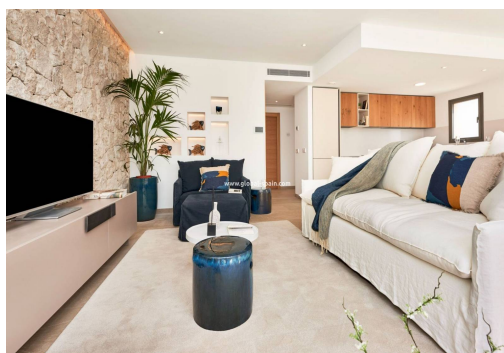
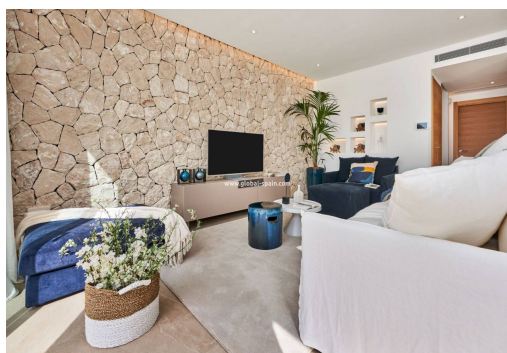




REF. IPM-29484

Resale · House · Es Capdellà



3 BEDROOMS



2 BATHROOMS



135M²



330M²



IN PROCESS



An ongoing construction project presents an opportunity to own one of the ten two-story semi-detached houses, showcasing architecture that embodies the authentic Mallorcan style. Each house comprises three bedrooms, two bathrooms (including one en-suite), and a guest toilet. Moreover, these houses feature a spacious living and dining area that seamlessly opens onto a terrace, accompanied by an integrated kitchen. This design on the ground floor ensures ample natural light and a sense of expansiveness. All residences within 'The Village' come with generously sized southwest-facing terraces and private gardens complete with a swimming pool. Additionally, each unit includes a storage room and provides two designated parking spaces. This development, rooted in traditional Mallorcan design, incorporates all the modern amenities for your utmost comfort, in line with the latest European construction quality standards. This commitment ensures exceptional s...

key features

■ Bedrooms: 3

■ Built: 135m²

■ Energy Rating: In process

■ Bathrooms: 2

■ Plot: 330m²