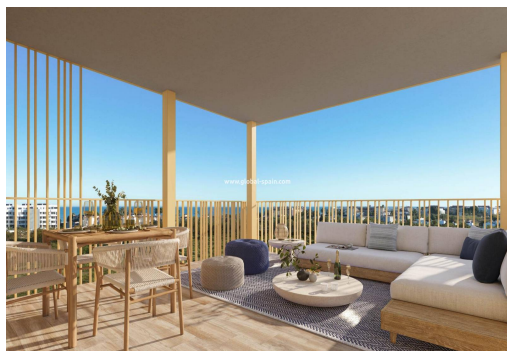




REF. PS-63838

New Build · Apartment · El Verger



2 BEDROOMS



2 BATHROOMS



81M²



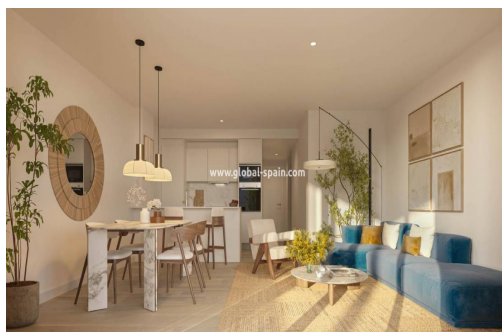
0M²



PRIVATE



B



NEW BUILD RESIDENTIAL IN EL VERGEL New Build residential complex of 1, 2 and 3 bedrooms apartments and penthouses in El Vergel designed as compact structures a response to the architects' and designers' constant pursuit of efficiency in the development. These decisions, spread throughout the various key points of the residential area, ensure that your home stays at the right temperature both in winter and summer. The main feature of the properties will be their large terraces. With regular proportions, they are the ideal spaces for outdoor living. The integration of the living room with these spacious terraces will unite your home as a livable volume where the interior merges with the exterior. Moreover, the construction in the area is planned to have minimal impact. The careful selection of construction materials has allowed you to enjoy the extraordinary views offered by the natural environment of residential complex permanently. Properties...

key features

■ Bedrooms: 2

■ Built: 81m²

■ Bathrooms: 2

■ Energy Rating: B

Characteristics

■ Air Conditioning: Yes

■ Communal pool

■ Elevator/Lift

■ Gym

■ Near Childrens Parks

■ Near Schools

■ Terrace: 20 Msq.

■ Beach: 400 Meters

■ Double Bedrooms: 2

■ Gated

■ Location: Coastal, Urbanisation

■ Near Commercial Center

■ Number of Parking Spaces: 1

■ Useable Build Space: 67 Msq.