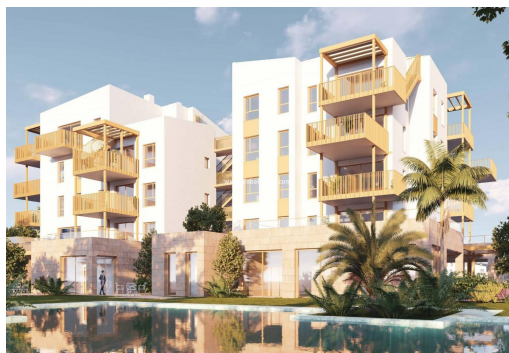




REF. PS-22930

New Build · House · El Verger



Planta baja | Ground Floor



Planta 1 | Floor 1



Vivienda  
Living  
13

Usable Area.....  
Superficie útil:  
Terrace area /Incl. Garden area  
Superficie terraza /Incl. Yard  
Entrance area /Incl. Parking /..  
Superficie entrada / Incl. Parking  
Built Area /Incl. Terrace/ ....  
Superficie construida /Incl. to



2 BEDROOMS



2 BATHROOMS



90M<sup>2</sup>



8M<sup>2</sup>



PRIVATE



B



**NEW BUILD RESIDENTIAL IN EL VERGEL** New Build residential complex of 65 modern 2 bedrooms apartments and 2 and 3 bedrooms townhouses in El Vergel. Following the sustainability and energy efficiency approach of residential complex the designers have created a project where terraced single-family homes predominate. This residential concept provides an environment where communal spaces are accessible to all residents, while each home has its own private spaces, both indoors and outdoors, for daily enjoyment. The communal areas breathe a natural and welcoming atmosphere. As you explore its different areas, you will find perfect spaces for walking, sports, and, above all, for cycling. Experience a unique lifestyle in residential community, where every detail is designed for your comfort and enjoyment. Dive into the refreshing pool, train in the gym, relax in the sauna, and share unforgettable moments with family and friends in the social club. Eq...

## key features

- Bedrooms: 2
- Bathrooms: 2
- Built: 90m<sup>2</sup>
- Plot: 8m<sup>2</sup>
- Energy Rating: B

## Characteristics

- Air Conditioning: Yes
- Beach: 700 Meters
- Communal pool
- Double Bedrooms: 2
- garden
- Gated
- Gym
- Location: Coastal, Urbanisation
- Near Childrens Parks
- Near Commercial Center
- Near Schools
- Number of Parking Spaces: 1
- Terrace: 21 Msq.
- Useable Build Space: 73 Msq.