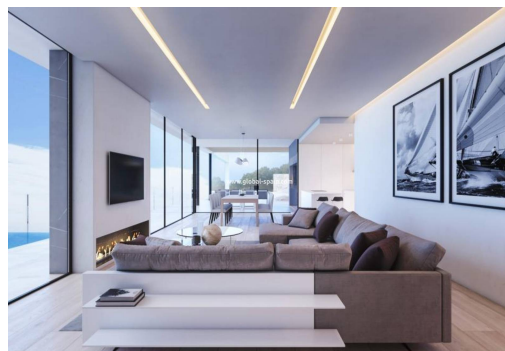




REF. PS-62555
New Build · Villa · Jávea



4 BEDROOMS



4 BATHROOMS



805M²



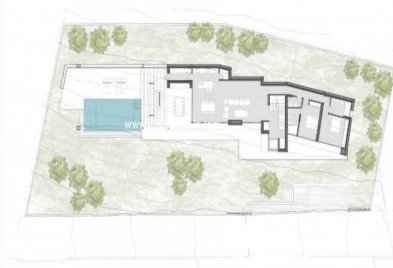
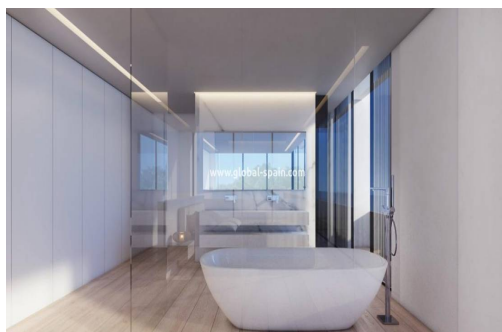
1.286M²



PRIVATE



B



NEW BUILD VILLA IN JAVEA New Build Luxury original architecture villa close to some of the most beautiful coves of Jávea, situated between Ambolo and La Granadella, in the tranquillity of a cul-de-sac. It extends over a large plot open to the sea and surrounded by mature pine trees. This villa has the particularity of having obtained one of the last licences authorising 3 levels of housing, which makes it even more attractive. You can still choose the interior and exterior finishes, which will allow you to give it your own identity, in the purest Ibiza style or even radically contemporary. The quality of construction is especially careful, and the level of finishes and materials have been carefully selected so that you can enjoy the beauty of the place with total peace of mind. With its four spacious bedrooms and four en-suite bathrooms, this property is perfect for both year-round living and unforgettable holidays. The infinity pool extends...

key features

■ Bedrooms: 4

■ Built: 805m²

■ Energy Rating: B

■ Bathrooms: 4

■ Plot: 1.286m²

Characteristics

■ Air Conditioning: Pre-Installed

■ Double Bedrooms: 4

■ Gated

■ Near Commercial Center

■ Number of Parking Spaces: 1

■ Terrace: 200 Msq.

■ Useable Build Space: 500 Msq.

■ Beach: 500 Meters

■ garden

■ Location: Coastal

■ Near Schools

■ Private Pool

■ Under-Build / Basement

■ Views: Sea