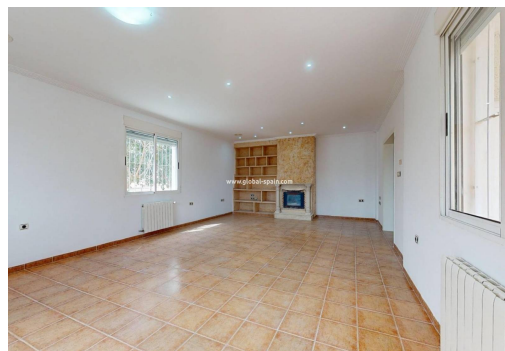
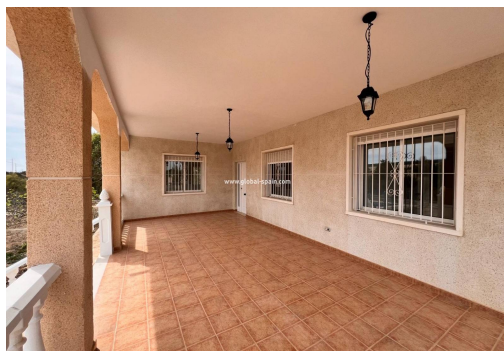




REF. SC-22870

Resale · Country Property/Finca · Elche



7 BEDROOMS



4 BATHROOMS



321M²



2.500M²



PRIVATE



IN PROCESS



Rustic country house 2 storey and basement in Elche / Bosch (Alicante), just 20 minutes from the beach, with mountain views. The house consists of 2 floors + basement, south facing, with 7 bedrooms, 4 bathrooms, large living room, kitchen with dining area, a storage room, a laundry room, large covered terrace and has a living area of 321m2 and a fenced plot of 2500m2. In the garden is a private pool, a carport and a summer kitchen. The house also have central heating. You could build a guest area in the basement or summer kitchen and the house is in perfect living condition. The property is located in a very good residential area and is just 3 minutes from shopping centers and just 20 minutes from Alicante airport. Details: 7 bedrooms, 4 bathrooms, 321m2 living area, 2500m2 fenced plot, garden, private pool, basement, covered terrace, carport, central heating, summer kitchen, storage room

## key features

- Bedrooms: 7
- Built: 321m<sup>2</sup>
- Energy Rating: In process
- Bathrooms: 4
- Plot: 2.500m<sup>2</sup>

## Characteristics

- Calefacción
- Country House
- garden
- Piscina
- Summer Kitchen
- Trastero
- Chimenea
- fenced
- mountain views
- Sotano
- terrace